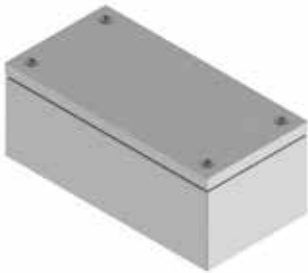


# ■ Casse di derivazione CDE

## CDE junction boxes

### Cieca Blind



#### Struttura

lamiera d'acciaio sp. 10/10 verniciata RAL 7035 bucciato.

#### Coperchio o porta incernierata

verniciati RAL 7035 bucciato con guarnizione in colata continua.

#### Composizione

Struttura, porta o coperchio, confezione di viteria.

**Grado di resistenza meccanica secondo IEC EN 62208: IK10**

#### Structure

10/10 thick steel sheet, painted textured RAL 7035.

#### Cover or hinged door

Painted textured RAL 7035, provided with a gasket applied in continuous casting.

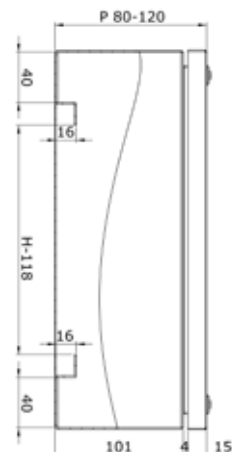
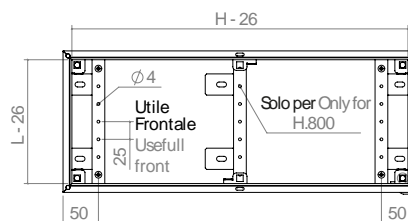
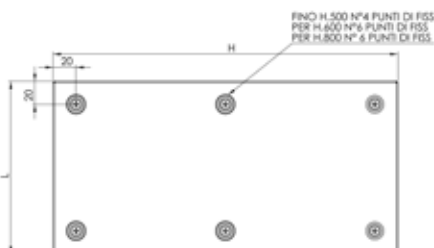
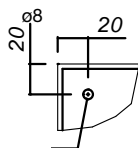
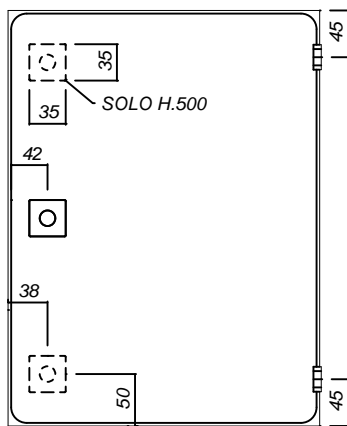
#### Composition

Structure, door or cover, set of accessories and screws for assembly.

**Mechanical resistance degree as per IEC EN 62208: IK10**

IP66

IP55



CASSA SENZA FLANGE IP 66 SODDISFA TYPE 4 BOX WITHOUT FLANGES IP 66 COMPLIES WITH TYPE 4	CASSA CON COPERCHIO INCERNERATO IP 55 SODDISFA TYPE 12 BOX WITH HINGED COVER IP 55 COMPLIES WITH TYPE 12	DIMENSIONE DIMENSIONS		
		ALTEZZA, H HEIGHT, H	LARGHEZZA, L WIDTH, L	PROFONDITÀ, P DEPTH, P
R5CDE1180	-	150	150	80
R5CDE9180	-	180	150	80
R5CDE2980	-	200	180	80
R5CDE2280	R5CDE2280C	200	200	80
R5CDE3180	-	300	150	80
R5CDE3280	R5CDE3280C	300	200	80
R5CDE4280	R5CDE4280C	400	200	80
R5CDE6280	-	600	200	80
R5CDE8280	-	800	200	80
R5CDE11120	-	150	150	120
R5CDE22120	R5CDE22120C	200	200	120
R5CDE31120	-	300	150	120
R5CDE32120	R5CDE32120C	300	200	120
R5CDE33120	R5CDE33120C	300	300	120
R5CDE42120	R5CDE42120C	400	200	120
R5CDE43120	R5CDE43120C	400	300	120
R5CDE44120	-	400	400	120
R5CDE52120	R5CDE52120C	500	200	120
R5CDE53120	-	500	300	120
R5CDE62120	-	600	200	120
R5CDE63120	-	600	300	120
R5CDE64120	-	600	400	120
R5CDE82120	-	800	200	120
R5CDE84120	-	800	400	120